

# StratuScape™

## Security Manager for IBM Lotus Domino

### EMAIL SECURITY

Provides comprehensive email protection from the latest exploits.

### ADVANCED MALWARE PROTECTION

StratuScape "Multi-Scan" provides the broadest defense against the latest viruses, bots, and emerging threats.

### DATA LEAKAGE PREVENTION

Advanced filtering technology detects and cleanses confidential information before getting a chance to leave the organization.

### ENTERPRISE PLATFORM SUPPORT

Supports Enterprise Linux (SUSE, RedHat, zLinux), AIX, Solaris and Windows 64-bit

Ready for

**IBM Lotus.**  
software

Ready for

**IBM Systems**  
with Linux.

### Overview

Today's threats to information security are greater than ever. Email messaging continues to be a key hub of communications for enterprises. As a result, email messaging is also a key point of distribution and coordination for the rapidly morphing malware, bots, fake URLs and phishing attacks that make up components of advanced information security exploits. Although web browsers and web browsing have been increasingly involved in this new generation of security exploits, email messaging is a key tool to gain access to a corporation's confidential information.

Security Manager for Lotus Domino provides comprehensive protection for your email infrastructure from the latest security threats. In addition, Security Manager incorporates powerful content filtering and cleansing technology to identify and limit distribution of confidential information.

### Native Lotus Domino Support

Security Manager for Lotus Domino runs on the Lotus Domino server monitors all in-bound and out-bound email, scanning attachments, MIME, and Notes Rich Text to discover hidden malware contained within an email message. Unlike other solutions which integrate with Domino at the SMTP server and miss all Domino to Domino email exchanges, Security Manager's direct integration with the Domino API ensures comprehensive coverage, even detecting insider threats.

### Role-based Administration

Security Manager implements role based administration that leverages and extends the built-in Lotus Domino user permissions and roles model. With role-based administration, tasks can be delegated to different experience levels allowing enterprises to maximize resources. In addition, you can provide access to the security visualization dashboard or reports based on the user's access role allowing even non-administrators to view statistics.

### Extend Collaboration Security with Add-in Modules for SameTime and QuickR

Built on the StratuScape Platform for Collaboration Security Management, you can extend Security Manager for Lotus Domino to coordinate security across your collaboration infrastructure. With the Security Manager add-ins installed you will be able to monitor your collaboration environment for exploit patterns, detect data leakage in motion, and manage unified security policies across the collaboration environment.

**StratuScape**  
Collaboration and Cloud Solutions™

## CUSTOMIZABLE ALERT SYSTEM

Security Managers's alert system allows Administrators to define or customize specific alerts and triggers to match their security policies.

## COMPLIANCE FILTER TEMPLATES

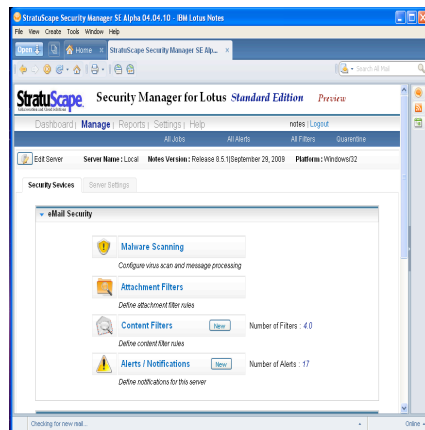
Pre-defined compliance filter packages provide sets of content filter templates designed to make meeting regulatory compliance (ex: HIPPA, SOX, GLBA) simpler.

## TECHNICAL SUPPORT

StratuScape provides both online forums and resources as well as for-fee support services to ensure your success in protecting your collaboration environments and confidential information.

For more information on any of our products or services please visit us on the Web at:

[www.stratuscape.com](http://www.stratuscape.com)



Security Manager security service management console

## System Requirements

- IBM Lotus Domino
  - version, 8.0\*, 8.5\*, 8.5.1
    - ➔ zLinux, x86 Linux, AIX 64-bit,
- Memory
  - ➔ Client Application – Lotus Notes Minimum
  - ➔ Server Application – Lotus Domino Minimum
- Storage
  - ➔ Management Application - 1GB
  - ➔ Security Logs - min 1GB actual size will depend upon data retention policies

\* Requires an 8.5.1 Notes Client for the management console. For web based administration these platforms are limited to the html web console.

## “Multi-Scan” Malware Detection Pooling

Security Manager multi-scan allows you to pool the expertise and malware detection capability among up to three anti-virus engines. Today's threats are morphing faster than traditional anti-virus companies can keep up, yet signature technology is still a critical component to a complete defense. Each Anti-virus vendor has their own strengths and weaknesses in threat research, with multi-scan pooling technology you can maximize you coverage without significant impact to system performance.

## Unified Policy Management

All policies for the Security Manager platform are stored in a central repository and can be deployed to any Security Manager enabled collaboration service. Security Manager allows the administrator to write a content or security policy once and deploy it to one or more systems. Policies can further be managed as groups allowing easier management and deployment.

## Activity Reporting

Security Manager provides a number of pre-defined reports for the most common information security management and compliance reporting needs. Administrators can also create their own customized reports or purchase pre-defined report packages from StratuScape.

For more information or to contact a sales representative you can send email to: [sales@stratuscape.com](mailto:sales@stratuscape.com) or [info@stratuscape.com](mailto:info@stratuscape.com)

## ADDITIONAL SERVICES AVAILABLE

- Security Assessments
- Technical Support
- Installation and Setup
- Maintenance
- Application Support

**StratuScape**  
Collaboration and Cloud Solutions™

1165 Park Avenue, San Jose, CA 95126  
Phone 866.856.8465 Fax 408.297.6200